

Panasonic

ideas for life



IP-Proprietary Telephones KX-NT300 Series

Panasonic introduces new IP telephone series that are stylish, intuitive, user friendly and follow universal design philosophy making them highly appealing, easy and comfortable to use by all system telephone users.



Newly Designed IP Telephones Take You to a New Dimension in Audio Experience, Communications Productivity and Customer Care.

This advanced range brings you the power of the existing Panasonic KX-TDA Hybrid IP PBXs as well as integration with the advanced KX-TDE IP PBX systems — allowing quick access to the entire spectrum of phone system features and applications.

KX-NT300 Series

Double-Tilt Design

The double-tilt design lets you adjust the base unit and LCD angles to match desks, tables, or any location. The base unit can be adjusted in eight steps, and the LCD moves separately to optimise the viewing angle.



8-Step Tilt Angles



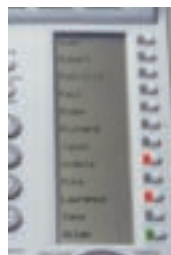
Headset Jack

» Main Features

Self Labelling LCD (Only KX-NT366)

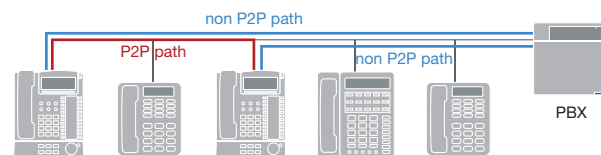
The KX-NT366 IP-proprietary telephone features 12 flexible buttons, with an LCD screen next to the buttons. Each item can be named on the LCD screen through personal or system programming to reflect the function of its corresponding flexible button. Plus, a total of 48 functions can be assigned to the 12 flexible CO buttons. Pressing the "NEXT PAGE" key toggles between pages.

*These features are available only on the KX-TDE100 and KX-TDE200.



Peer-to-Peer Connection

Direct communication between KX-NT300 series is available after the communication was established by TDE series. And Peer-to-Peer communication reduces network traffic and PBX's resource.



Hands-Free Communication with a Bluetooth® Headset

Mounting the KX-NT307 lets you connect a commercially available Bluetooth® headset for hands-free communication (Answer a call/End a call/Voice communication). This makes it possible to operate a PC during conversations and to communicate comfortably at a distance from the telephone.



Improved Voice Quality (Between NT300 Series)

In Peer-to-Peer connection, G.722 protocol ensures excellent voice quality for smooth communication.



Picture : KX-NT366

www.beophone.rs

NT300 Series Line-up

6-Line LCD & Self Labelling



KX-NT366

- 6-Line Backlit Display
- 4 x 12-Self Labelling, Flexible CO Buttons
- Digital Speakerphone
- 2 Ethernet Ports (100 Base-T)
- Power-over-Ethernet (PoE)
- Bluetooth® Module (option)

6-Line LCD



KX-NT346

- 6-Line Backlit Display
- 24 Flexible CO Buttons
- Digital Speakerphone
- 2 Ethernet Ports (100 Base-T)
- Power-over-Ethernet (PoE)
- Bluetooth® Module (option)
- Add-on 12-Key Module (option: KX-NT303) OR Add-on 60-Key Module (option: KX-NT305)

3-Line LCD



KX-NT343

- 3-Line Backlit Display
- 24 Flexible CO Buttons
- Digital Speakerphone
- 2 Ethernet Ports (100 Base-T)
- Power-over-Ethernet (PoE)
- Bluetooth® Module (option)
- Add-on 12-Key Module (option: KX-NT303) OR Add-on 60-Key Module (option: KX-NT305)

1-Line LCD



KX-NT321

- 1-Line
- 8 Flexible CO Buttons
- Digital Speakerphone
- 2 Ethernet Ports (100 Base-T)
- Power-over-Ethernet (PoE)

» More Features

• Navigator Key

The Navigator key allows fast, one touch access to multiple phone system functions. The ergonomically designed navigation key makes it easy to go through phone system feature menus.

• Second Ethernet Port

Reduce cable clutter on your desktop and reduce cost of cabling by using the built-in second Ethernet port to connect your personal computer (or other IP network device) to the IP network without the cost of additional cabling.

• Flexible CO Buttons

One-touch function access Flexible CO Buttons save time and effort. These keys can be used to store telephone numbers, or access frequently used phone system features.

• Add-on 12/60-CO Key Module Connection

Add-on 12/60-CO Key Module works as not only DSS keys but also Flexible CO Buttons. KX-NT303/NT305 Add-on 12/60-CO Key Module is connected directly to KX-NT346 and KX-NT343. Self-Labeling model KX-NT366 does not support this Module.

Specifications

| Feature | Model | KX-NT366*1 | KX-NT346 | KX-NT343 | KX-NT321 |
|--------------------------------------|-------|---|---|---|--------------------------------------|
| LCD | | 24 Characters x 6 Lines Graphic | 24 Characters x 6 Lines Graphic | 24 Characters x 3 Lines Character | 16 Characters x 1 Line Character |
| CO keys | | 48 (12 x 4) | 24 | 24 | 8 |
| Self Labelling | | Yes | No | No | No |
| CODEC *3 | | G.729A, G.711, G.722 | | | |
| SP Phone | | Yes | Yes | Yes | Yes |
| 2nd Ethernet Port (For PC) | | Yes | Yes | Yes | Yes |
| LCD Backlight | | Yes | Yes | Yes | No |
| Handset Volume Control | | 4 Levels Electric vol. | 4 Levels Electric vol. | 4 Levels Electric vol. | 4 Levels Electric vol. |
| SP-Phone (Monitor) Volume Control | | 12 Levels Electric vol. | 12 Levels Electric vol. | 12 Levels Electric vol. | 12 Levels Electric vol. |
| Ringer Volume Control | | 4 Levels Electric vol.+ Off position | 4 Levels Electric vol.+ Off position | 4 Levels Electric vol.+ Off position | 4 Levels Electric vol.+ Off position |
| Power Supply | | AC Adaptor, and Power over Ethernet (Power over LAN™ (IEEE802.3af Class2)compliant) | | | |
| LCD Contrast Control | | 4 Levels | 4 Levels | 4 Levels | 3 Levels |
| Message/Ringer Lamp | | Yes *4 | Yes *4 | Yes *4 | Yes*5 |
| Whisper OHCA | | Yes | Yes | Yes | Yes |
| Headset Jack (ø2.5mm) | | Yes | Yes | Yes | Yes |
| Auto Redial | | Yes *6 | Yes *6 | Yes *6 | Yes*6 |
| Off-Hook Monitor | | Yes | Yes | Yes | Yes |
| Handset/Headset Mic Mute | | Yes | Yes | Yes | Yes |
| Speaker Phone Mic Mute | | Yes | Yes | Yes | Yes |
| Phone Directory | | Yes | Yes | Yes | Yes |
| Feature Access | | Yes | Yes | Yes | No |
| (Out-going) Call Log | | Yes | Yes | Yes | Yes |
| (In-coming) Call Log | | Yes | Yes | Yes | Yes |
| Melody Ringer | | 10 Titles | 10 Titles | 10 Titles | No |
| Wall Mount | | Possible | Possible | Possible | Possible |
| Peer-to-Peer Connection | | Yes | Yes | Yes | Yes |
| Automatic rerouting to secondary PBX | | Yes | Yes | Yes | Yes |
| VLAN | | Yes | Yes | Yes | Yes |
| QoS | | DiffServ | DiffServ | DiffServ | DiffServ |
| Max. Jitter Buffer Size | | 200 ms | 200 ms | 200 ms | 200 ms |
| DHCP Client | | Yes | Yes | Yes | Yes |
| Wideband CODEC | | Yes | Yes | Yes | Yes |
| System Programming | | Yes | Yes | Yes | Yes |
| Station Programming | | Yes | Yes | Yes | Yes |
| Local Programming | | Yes | Yes | Yes | Yes |
| Operating Temperatures | | 0-40 degree centigrade | | | |
| Option Unit Connention | | | | | |
| KX-NT303 Add-on 12 Key Module | | No | Yes | Yes | No |
| KX-NT305 Add-on 60 Key Module *2 | | No | Yes | Yes | No |
| KX-NT307 Bluetooth® Module | | Yes | Yes | Yes | No |
| Optional AC Adaptor | | KX-A239 | KX-A239 | KX-A239 | KX-A239 |
| Dimensions : | | | | | |
| W x D x H mm | | 202x253x129mm (Low angle:Tilt 15deg.) | 202x253x129mm (Low angle:Tilt 15deg.) | 202x240x129mm (Low angle:Tilt 15deg.) | 175 x 210 x 129 (Low) |
| | | 202x201x224mm (High angle:Tilt 45deg.) | 202x201x224mm (High angle:Tilt 45deg.) | 202x201x211mm (High angle:Tilt 45deg.) | 175 x 188 x 148 (High) |
| Weight : Kg | | 1.31kg | 1.27kg | 1.25kg | 0.82 kg |

*1 KX-NT366 is only available for KX-TDE100/KX-TDE200.

*2 KX-NT305 is only available for KX-TDE100/KX-TDE200.

*3 G.722 is only available for KX-TDE100/KX-TDE200.

*4 Dual-coloured LED (Green & Red)

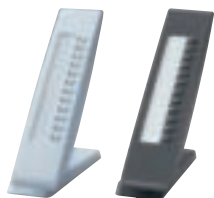
*5 Single coloured LED (Red)

*6 Auto Redial feature is available on digital CO.

www.beophone.rs

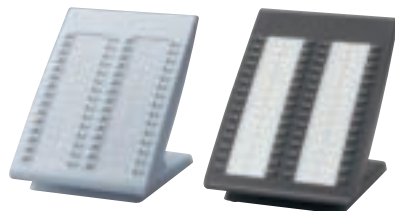
Options

■ Add-on Key Module



KX-NT303

• Add-on 12-Key Module
(For KX-NT346 and KX-NT343 only)



KX-NT305

• Add-on 60-Key Module
(For KX-NT346 and KX-NT343 only)

■ Bluetooth® Module



KX-NT307

*The Bluetooth word mark and logos are owned by the Bluetooth SIG, Inc. and any use of such marks by Matsushita Electric Industrial Co., Ltd. is under licence.